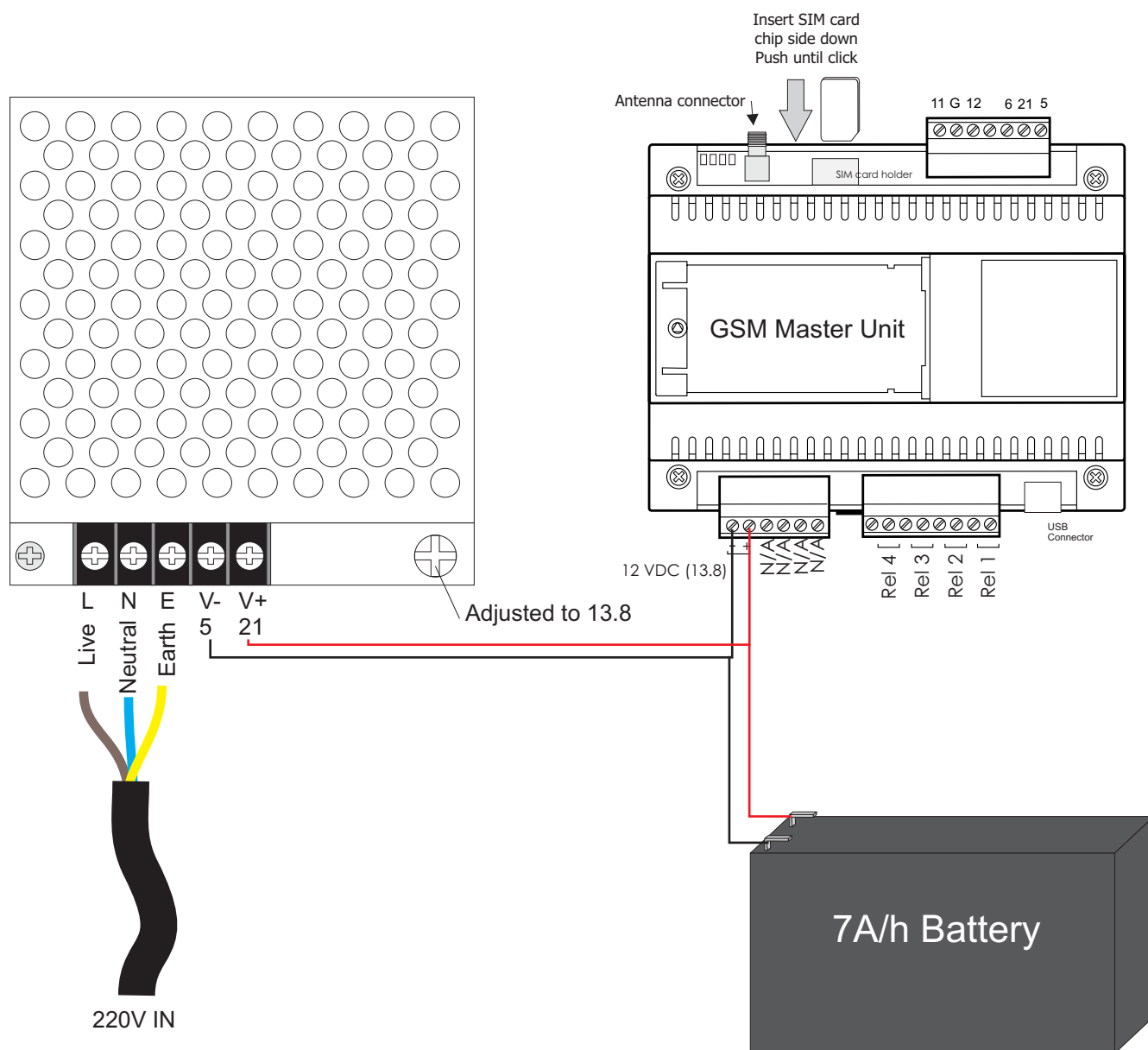


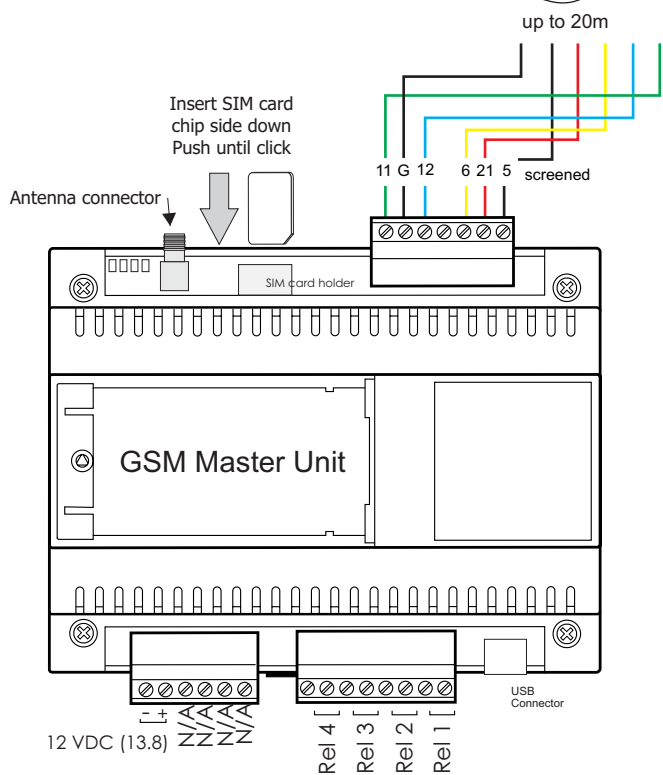
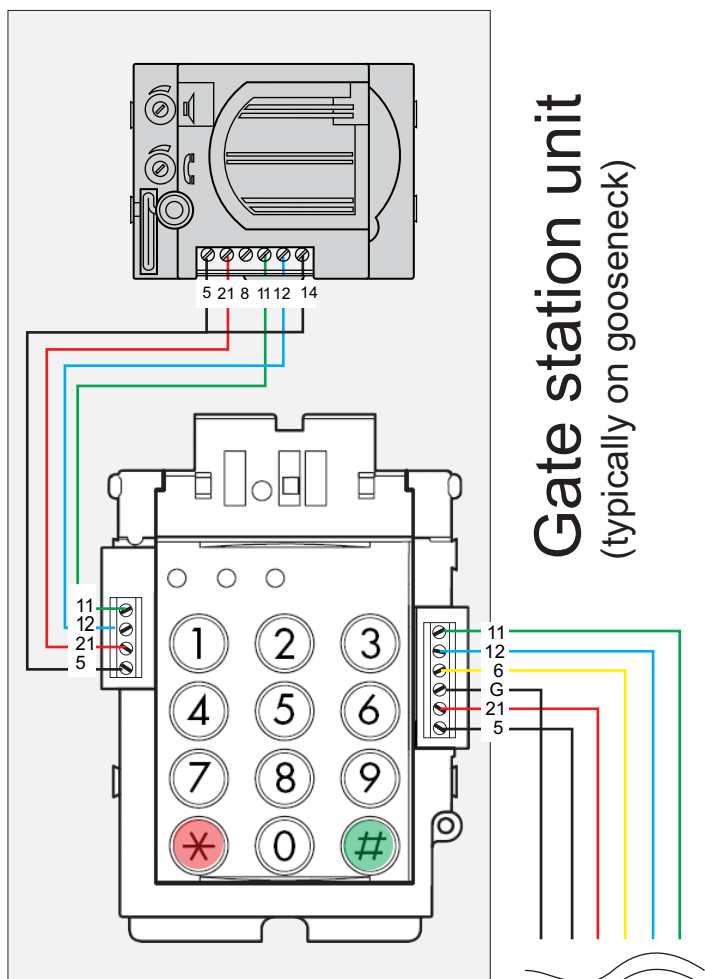
GSM INTERCOM

Connection to powersupply



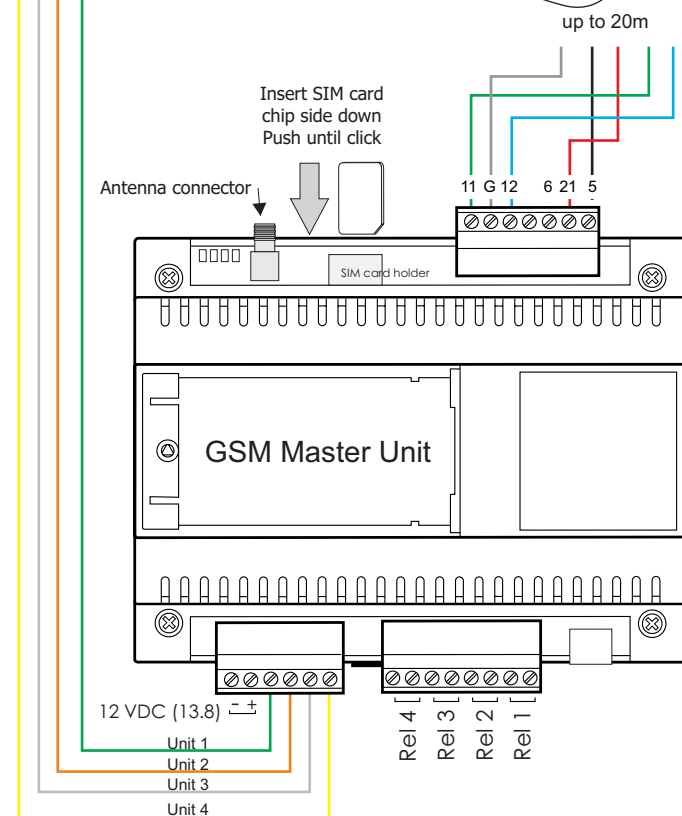
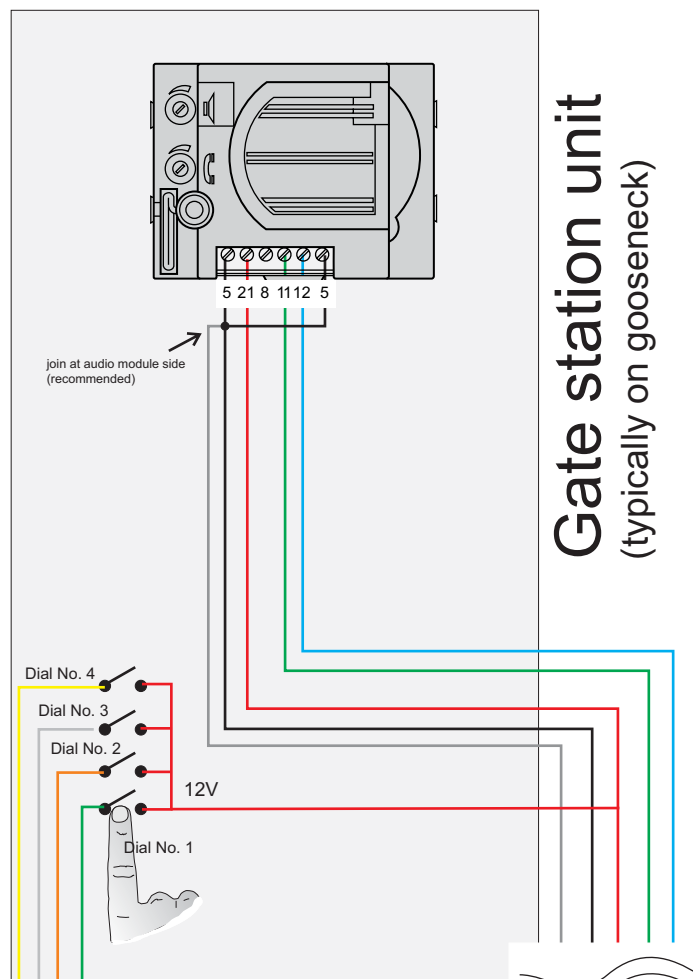
GSM INTERCOM

Keypad



GSM INTERCOM

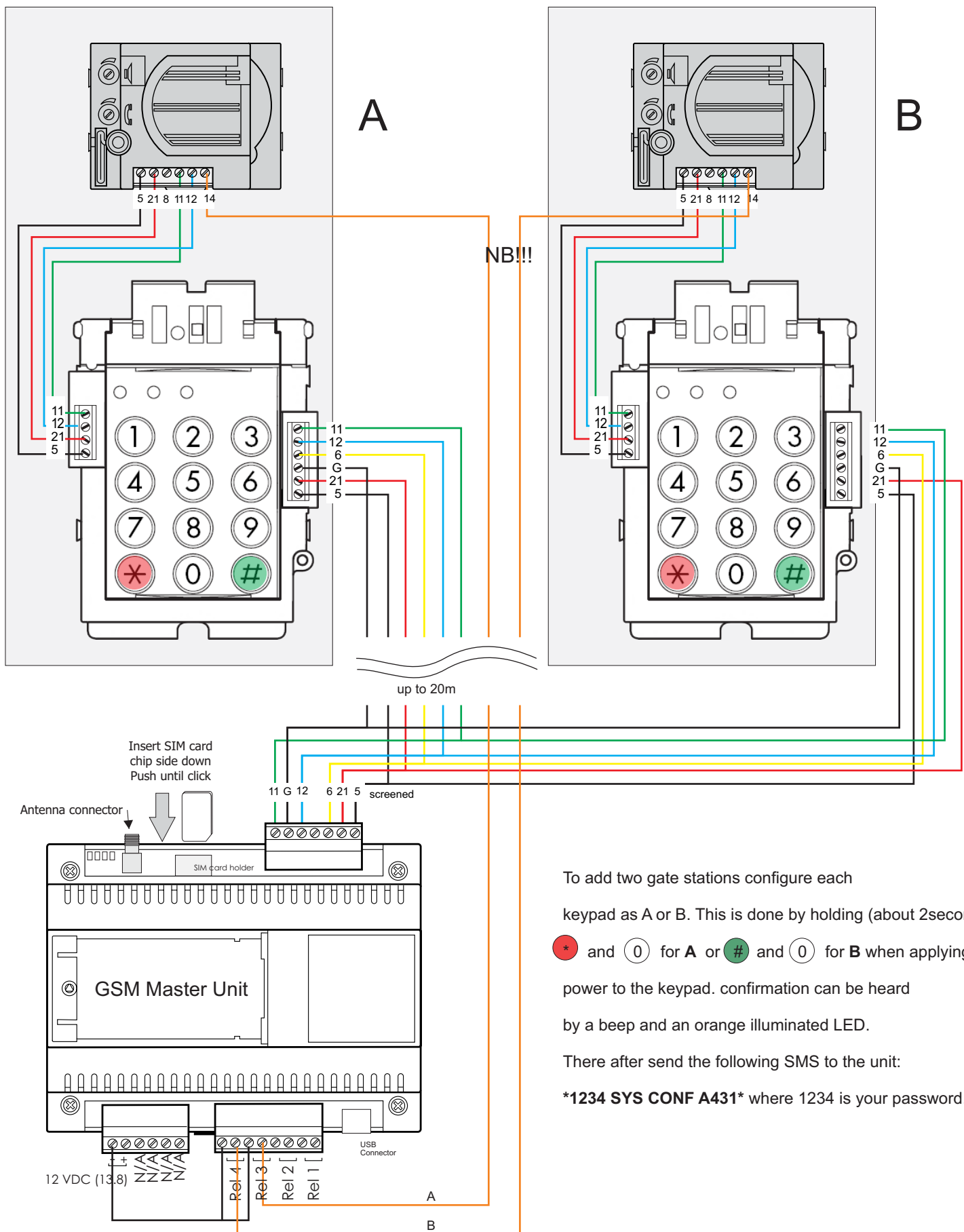
4 Button



NOTE: All relays are normally open contacts

GSM INTERCOM

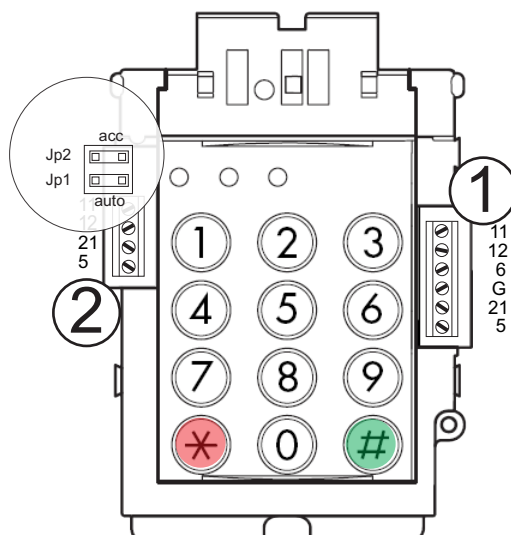
Two gate stations



To add two gate stations configure each keypad as A or B. This is done by holding (about 2seconds) * and 0 for **A** or # and 0 for **B** when applying power to the keypad. confirmation can be heard by a beep and an orange illuminated LED.

There after send the following SMS to the unit:

1234 SYS CONF A431 where 1234 is your password.



Access control

The gatestation with access control module is now equipped with the ability to trigger the relays on the GSM master board by entering in a password on the keypad. This is useful in the case where entry and exit maybe be provided to home owners and guests, in addition to the missed call feature of the intercom. This feature is enabled if Jp2 is inserted. (See above diagram)

Programming access control

All passwords for access control are programmed via the keypad. Four passwords may be programmed to activate the respective four relays on the GSM master board.

1. To enter programming mode enter 1 2 3 4 5 and hold down the red * button
(1 2 3 4 5 is the default master password).
2. A beep will be heard which signifies programming mode.
3. Press numbers 1 - 4 to program the password for relays 1 - 4
4. Press the red *
5. Enter the password (up to 8 numbers) and press the red*
6. An acknowledgment tone will be heard.

The unit has now exited from programming mode and the programmed password may be used by pressing the password followed by the green #.

NOTES:

1. Password 1 is the also master password - changing this will change the programming password.
2. All numbers less than 4 characters are interpreted as a unit number, therefore choose a password of 4 numbers or more for access control.
3. If an incorrect password is entered 3 times the keypad will prevent any input for the following 20 seconds. Reactivation is indicated by a beep.
4. A single invalid tone indicates an unprogrammed unit number has been entered
5. A double invalid tone indicates an invalid access control password has been entered

Resetting the master password:

1. Hold down the numbers 1 9 while applying power until a beep is heard.
2. Enter in the new password followed by the green # button
3. Power-cycle the unit

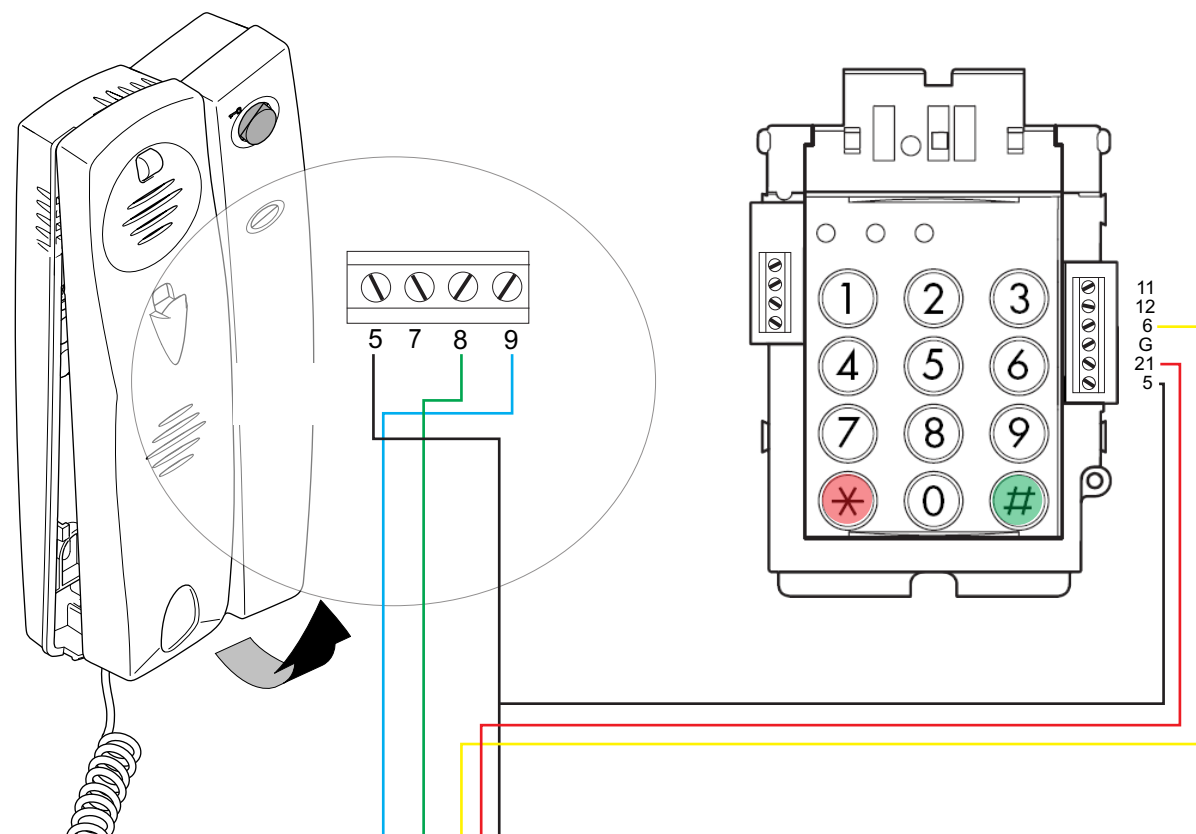
Auto-dial:

The gatestation may be configured to autodial (no need to press the green # for either access control or unit dialing). This is done by placing the jumper provided on programming Jp1. (See above diagram)

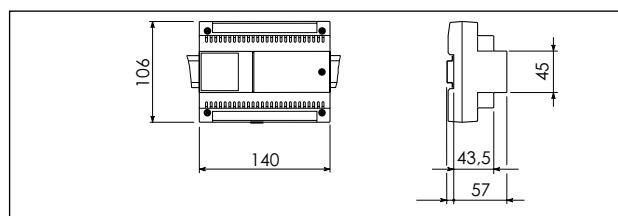
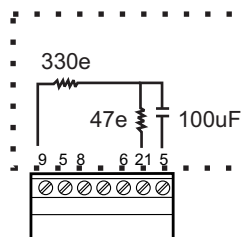
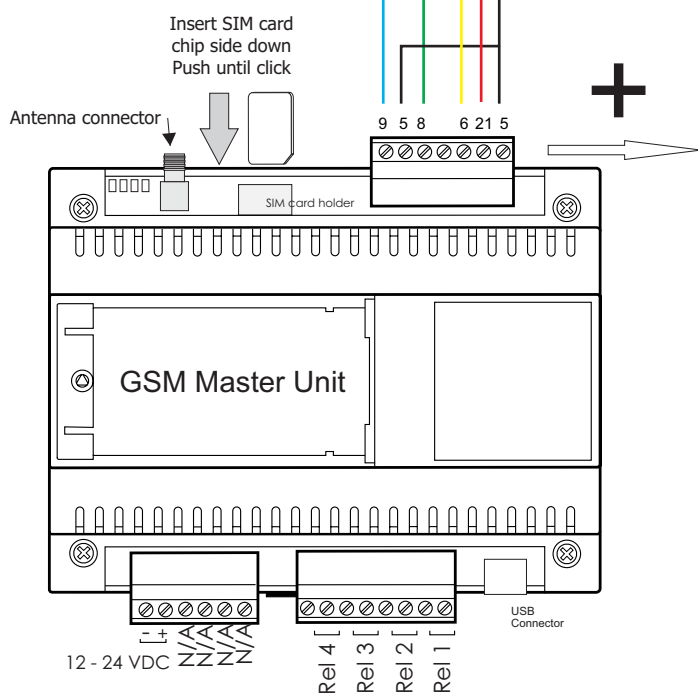
CONNECTING A HANDSET

GSM/I

bpt



Connection unit
may be purchased
from supplier



Booting sequence

On power up all LEDs will be on. As the unit passes the various tests the LEDs will turn off. Only when the green LED is flashing is the unit in the normal running state.

Please note that if the unit is connected to a computer via the USB cable, none of the SMS or dialing capabilities will work. Remove the USB cable after programming and the unit will proceed with the boot sequence.

Programming

The unit may be programmed via PC software through the USB port or via SMS.

The following are the structure of the SMSs for the various programming options. The default password is **1234** and must be changed. All messages start and end with a * (asterisk)

Change password from 1234 to 7788: ***1234 SYS PASS 7788***

Add airtime: ***1234 SYS AIRT 1234123412341234***
where 1234123412341234 is the recharge voucher pin

Retrieve airtime available: ***1234 SYS AIRT* or *1234 SYS NETW *100#* (for vodacom) or *1234 SYS NETW *141#* (for MTN)**

Set automatic hang-up time to 60s: ***1234 SYS HANG 2***
1=30s, 2=60s, 3=90s, 4=120s, 5=150s, 6=180s, 7=210s, 8=240s

Set the master number: ***1234 TEL MAST 27821234123***

The master number will be informed when the unit is rebooted and when the unit checks in.

Adding & Calling numbers (Keypad Version)

Each unit may have two numbers associated with it. By pressing the unit number and either the * or # dial buttons the associated number will be dialed. (# for number 1 and * for number 2)

The GSM intercom may have up to 400 numbers (200 for number 1 and 200 for number 2, or 400 for number 1)

The unit will give an audible two-beep tone acknowledging that the call is in progress. If an unprogrammed unit is dialed, an error tone will be heard.

Should the caller wish to cancel the phone call at any stage they may press either of the dial buttons to hang up.

NB: all numbers added must contain the country code ie, 27821234123 and no +s

Add number 1 for unit 123: ***1234 TEL ADDN 27821234123,123***

To add number 2 for the same unit, **200** should be added to the unit number

Add number 2 for unit 123: ***1234 TEL ADDN 27821234123,323***

Remove a number: ***1234 TEL DELN 27821234123***

Clear telephone list: ***1234 TEL CLRN***

Adding & Calling numbers (4 Button Version)

Telephone number management is very similar to the keypad version, except the unit will only dial four numbers. These will be triggered by applying 12V to one of the 4 inputs. For example triggering input 2 will call unit number at position 2.

Gate triggering

At any point during the conversation the home owner may key in on their keypad the number 1 or 2 or 3 or 4. This will activate one of the 4 relays at the unit respectively which will typically trigger the gate to be opened.

Missed-call activation

The GSM unit comes equipped with a missed call function. Only programmed numbers may activate this function. When the caller phones the number of the SIM card in the GSM intercom, the unit will proceed to hang up the called and activate relay 1 and no charge to the caller.

Troubleshooting:

Missed call not working:

- 1) Caller Line Identity (CLI) not activated on the SIM card, typically with contract SIM cards
- 2) Telephone number not correctly programmed with 27xxxxxx

Flashing RED, GREEN, ORANGE LED:

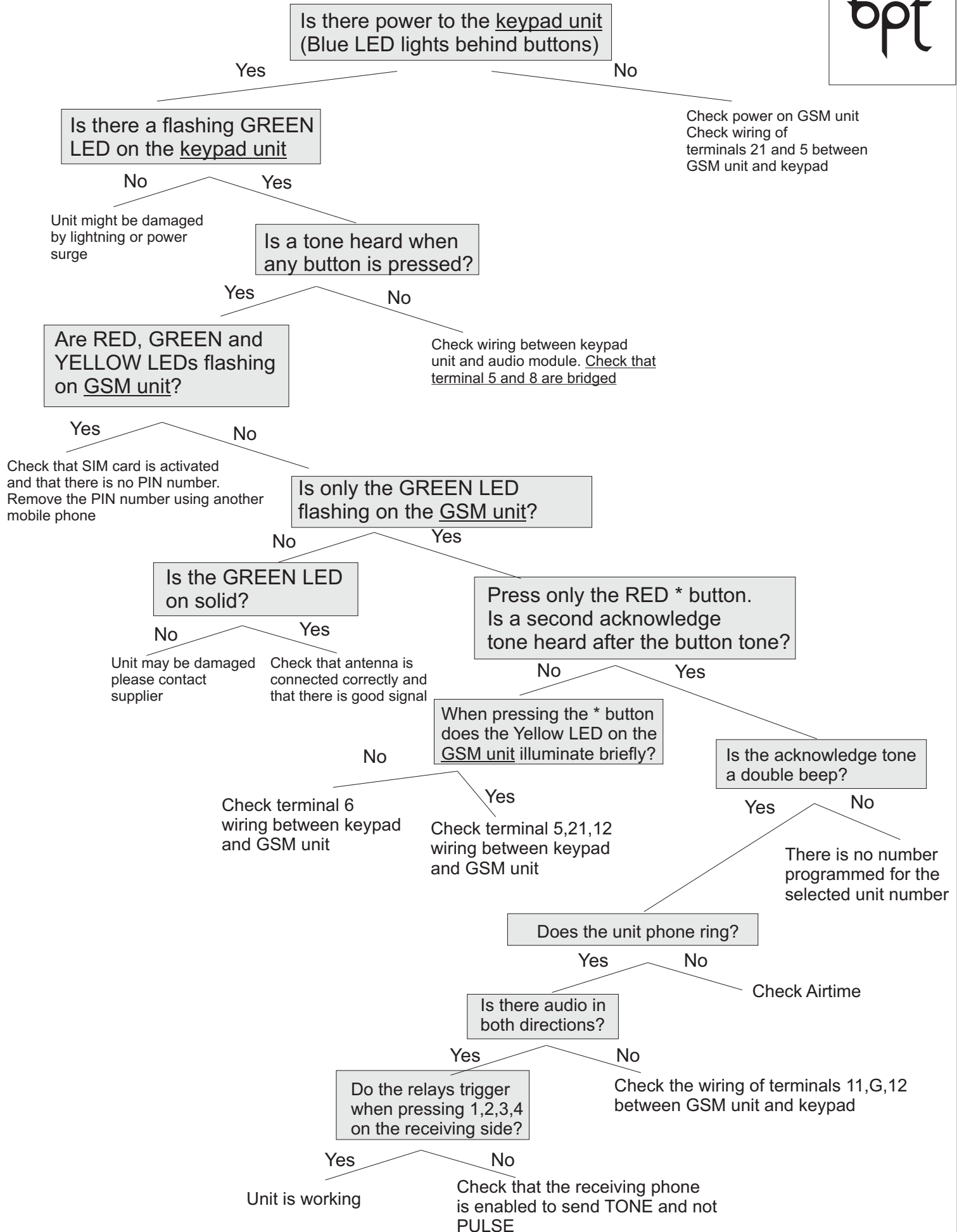
- 1) Pin number on SIM Card (must be removed)
- 2) SIM card not correctly inserted

Solid GREEN LED

- 3) Antenna not correctly attached or SIM card not activated

Unit appears not to function at all

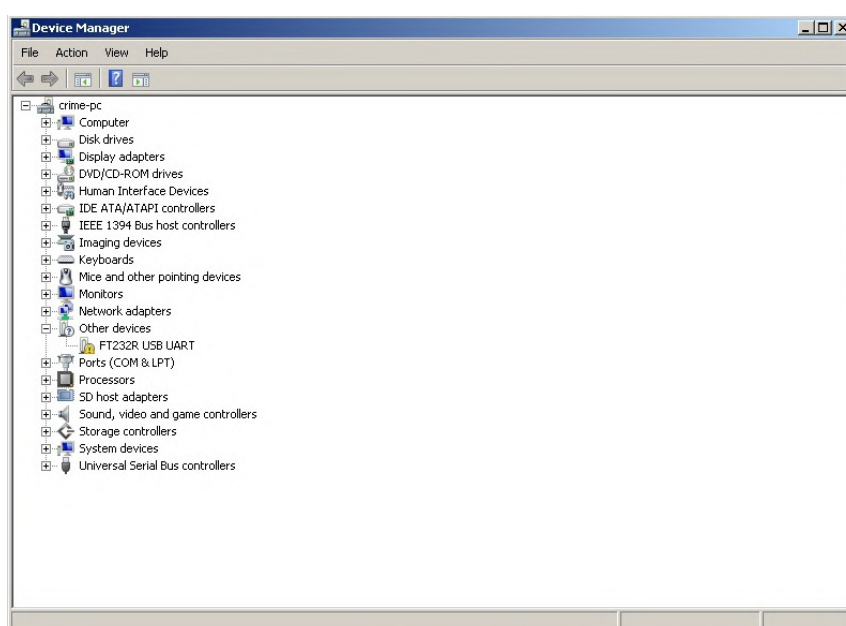
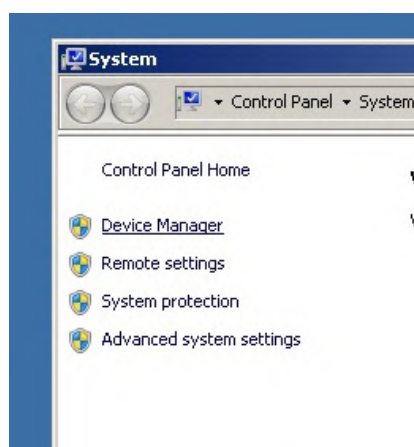
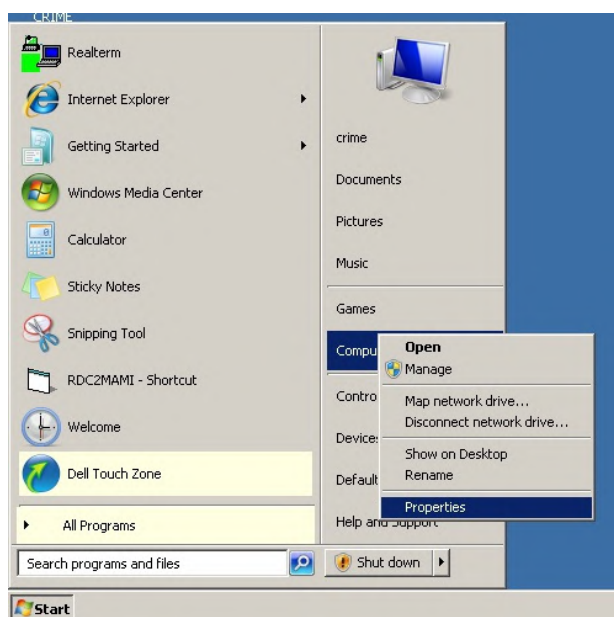
Please follow the steps on the trouble shooting page

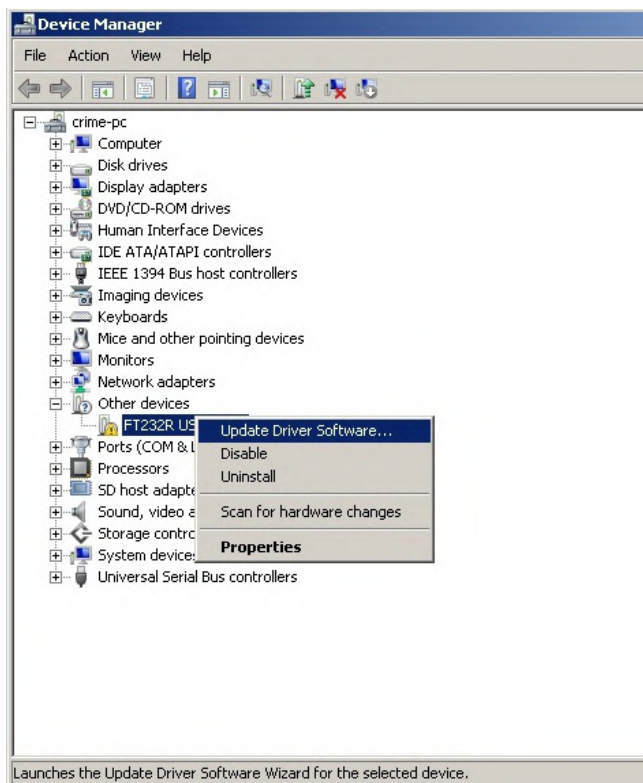


Installation of GSM units in Windows7

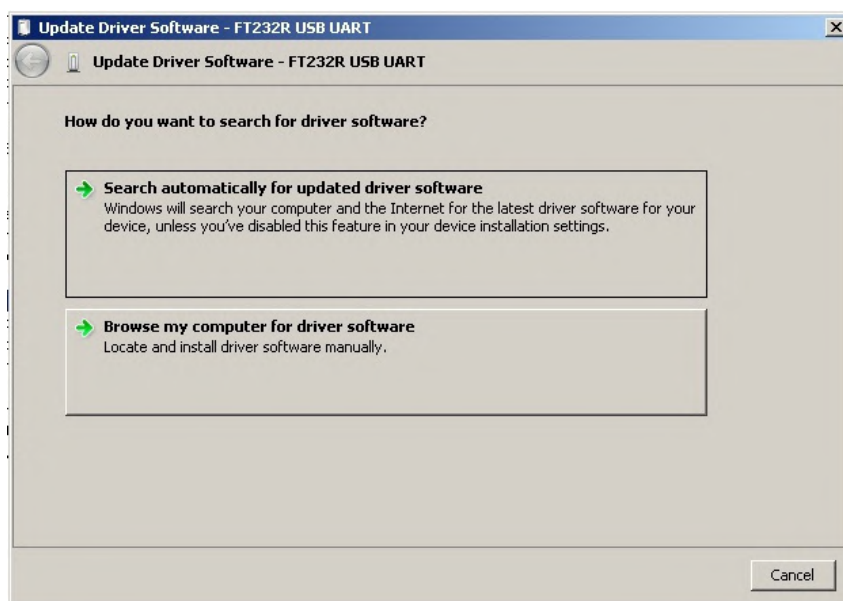
By default Windows7 does not have correct drivers for the GSM units.

- Plug the USB into the GSM and the computer, cancel any attempts or popups of windows to connect online to try and download a driver.
- Click the start icon on the bottom left, right-click on 'Computer' and select properties
- In the window to follow click the 'Device manager' link in the top left of the screen

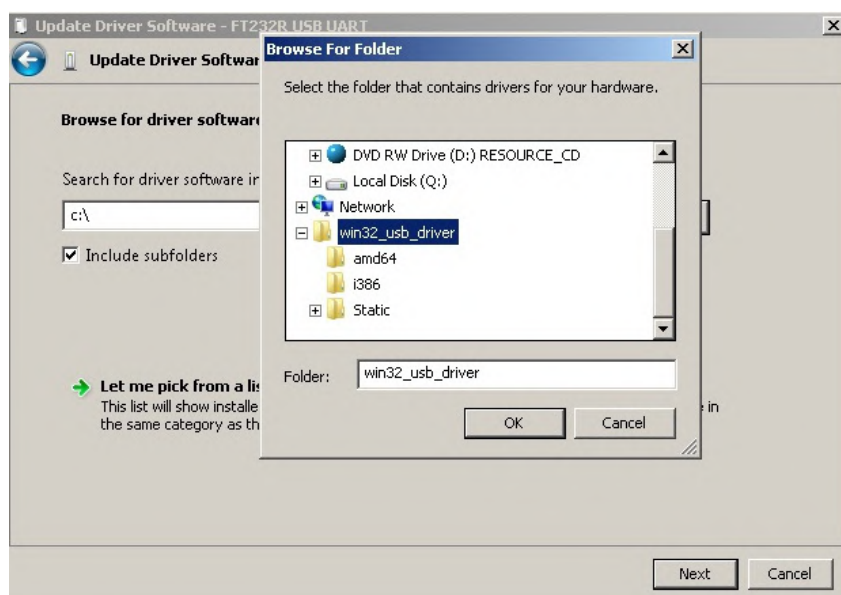




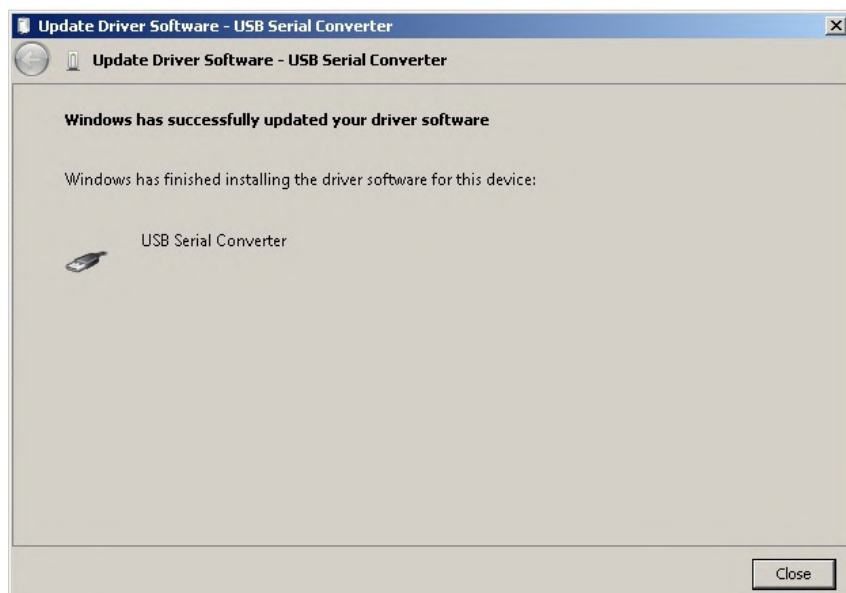
Under the Other devices, a device called FT232R will be highlighted with a yellow exclamation mark. Right-Click on it and select 'Update Driver Software'



Select the second option to 'Browse my computer for driver software'.



On the screen that follow browse for the directory of the extracted driver files. This will typically be D:\win32_usb_driver on your CDRom

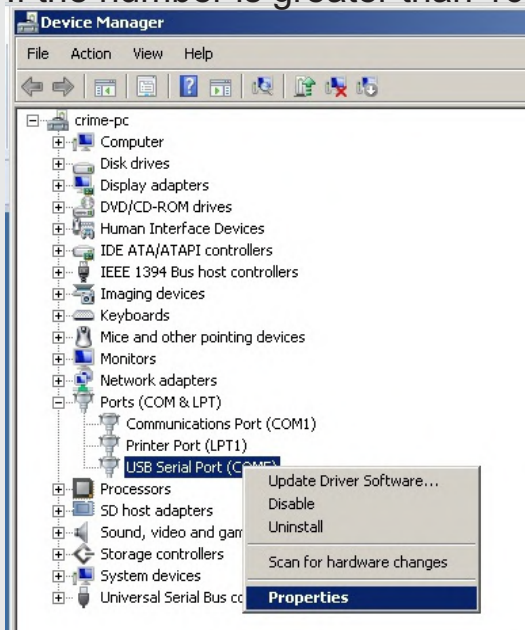


The USB serial driver is now installed and windows will proceed to install the Serial Comm port driver.

Click Close once this is complete.

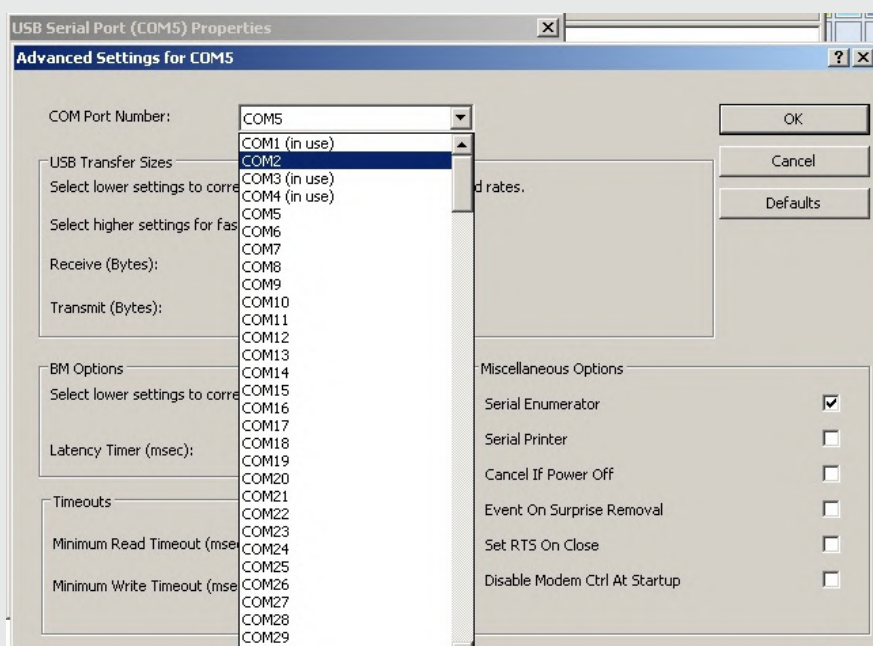
Open Device manager and you will now see a device called USB Serial Port (**COM X**) in the Ports (COM & LPT) menu. Please make sure that the **X** in the **COM X** is a number less than 16.

If the number is greater than 16 proceed onto the next steps



Right click on the USB Serial Port (COM X) and select properties.

On the screen that follows click the Port Settings tab and click the Advanced button



Change the COM Port Number to COM16 or below.

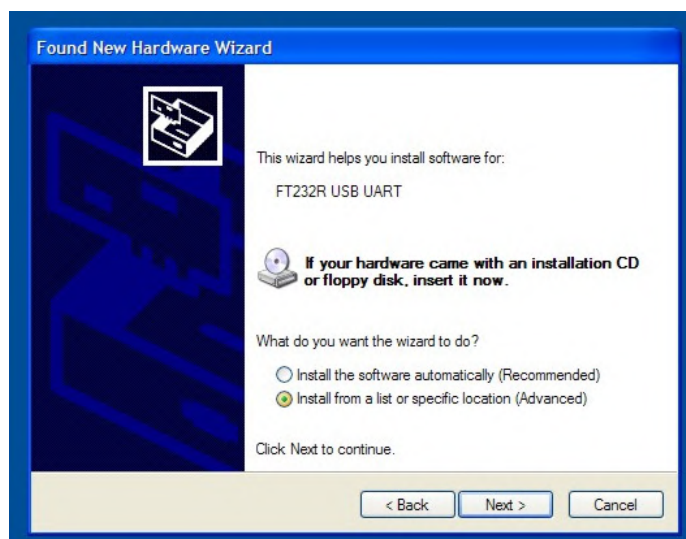
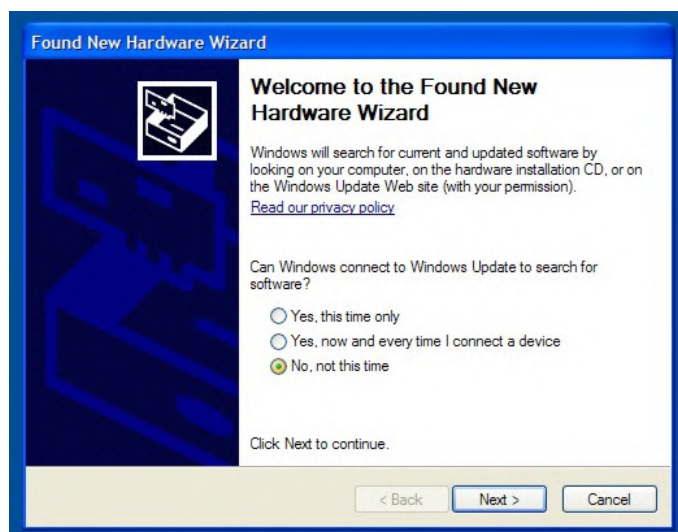
Click OK
Click OK

Unplug the device
Plug in the device
The unit will now be installed under the COM port selected

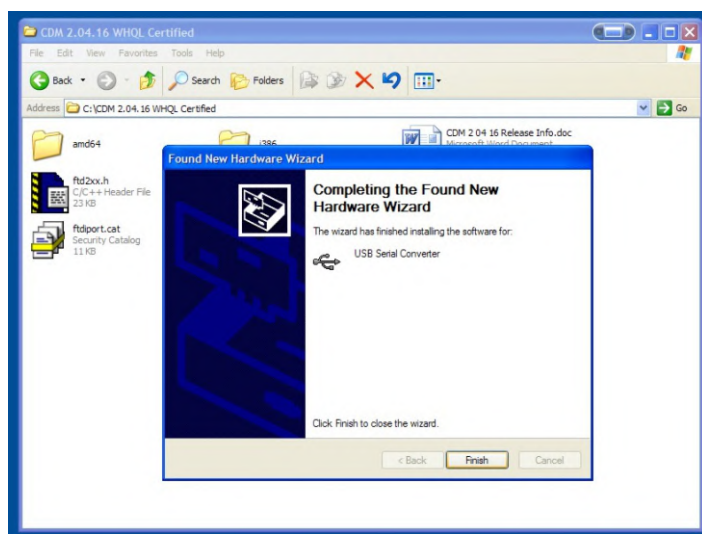
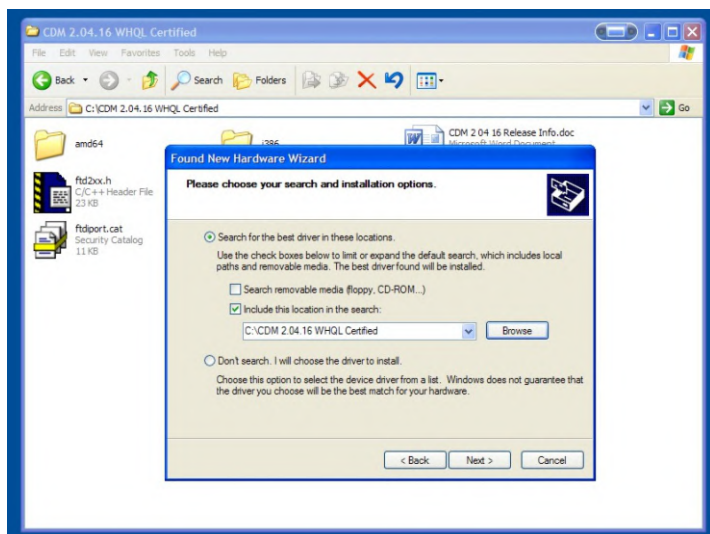
You may now proceed to the installation of the GSM Configuration software on the CD

Installation of GSM units in WindowsXP

1. Plug the a USB cable into the unit and apply power to the terminals
If your PC does not have the driver install you will be presented with the following screen:



2. Select “No, not this time” and click the Next button
3. Select “Install from a list or specific location (Advanced)” and click the Next button



4. Select the option “Include this location in the search”, click the browse button and locate the folder where the driver file are. This is typically D:\drivers\XP, click OK and click Next
5. The driver will be installed and you make click the Finish button.
6. If the Hardware wizard requires an additional driver repeat steps 1-6.

USB Driver verification in Windows XP

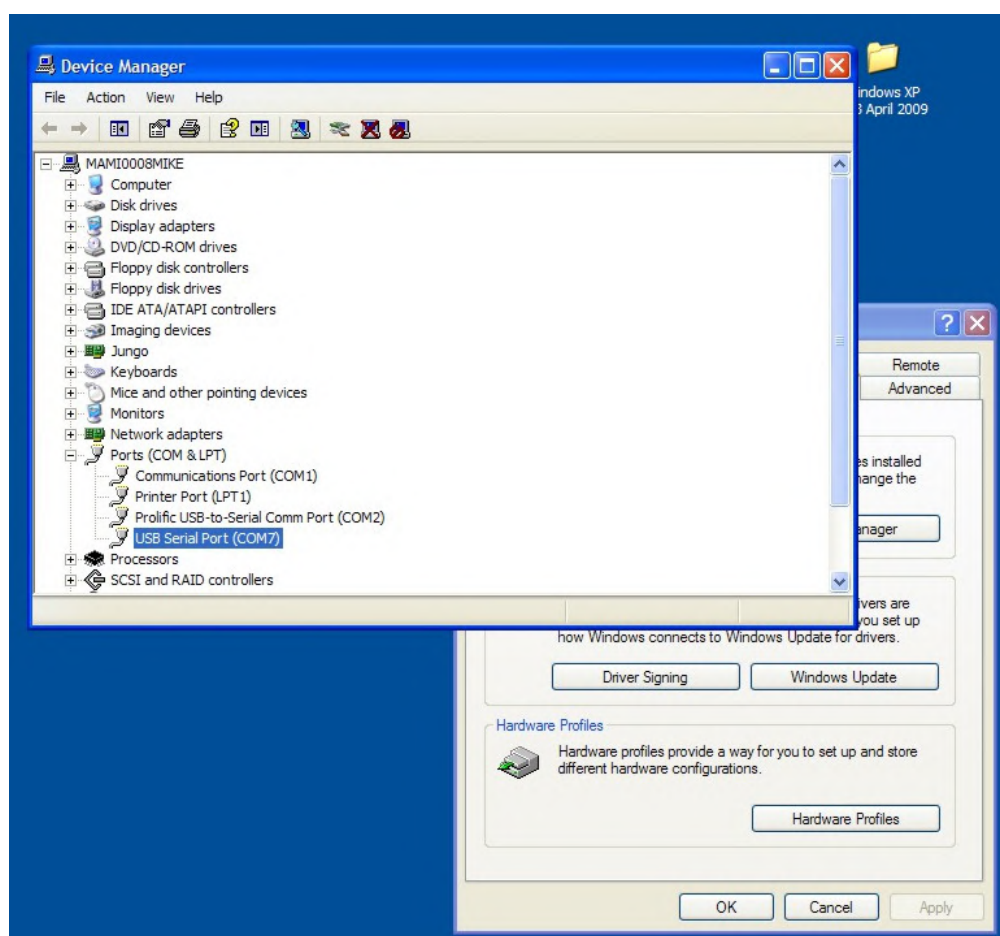
To Make verify that the driver has been successfully installed, open control panel and double click the System icon.

Click on the Hardware tab.

Click the Device Manager button.

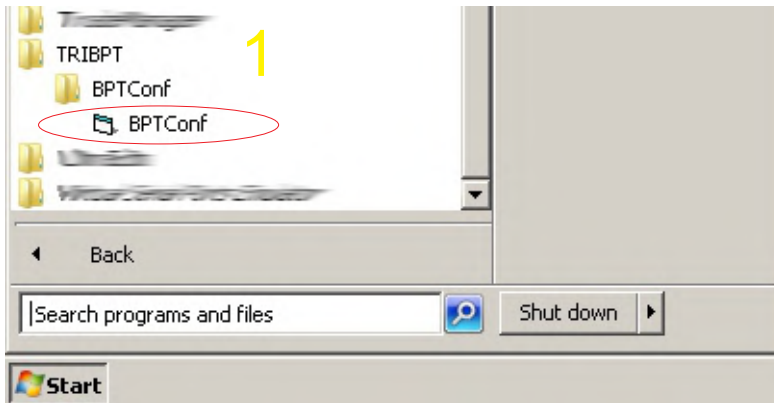
Scroll to “Ports (COM & LPT)” and expand the list by clicking the +

You should see a device called USB Serial Port (COMX) where X is a number.

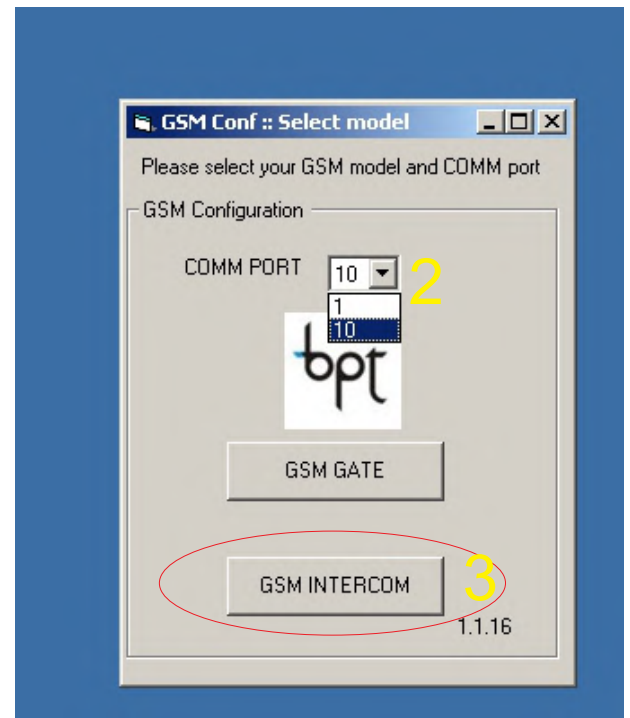


GSM Intercom configuration program

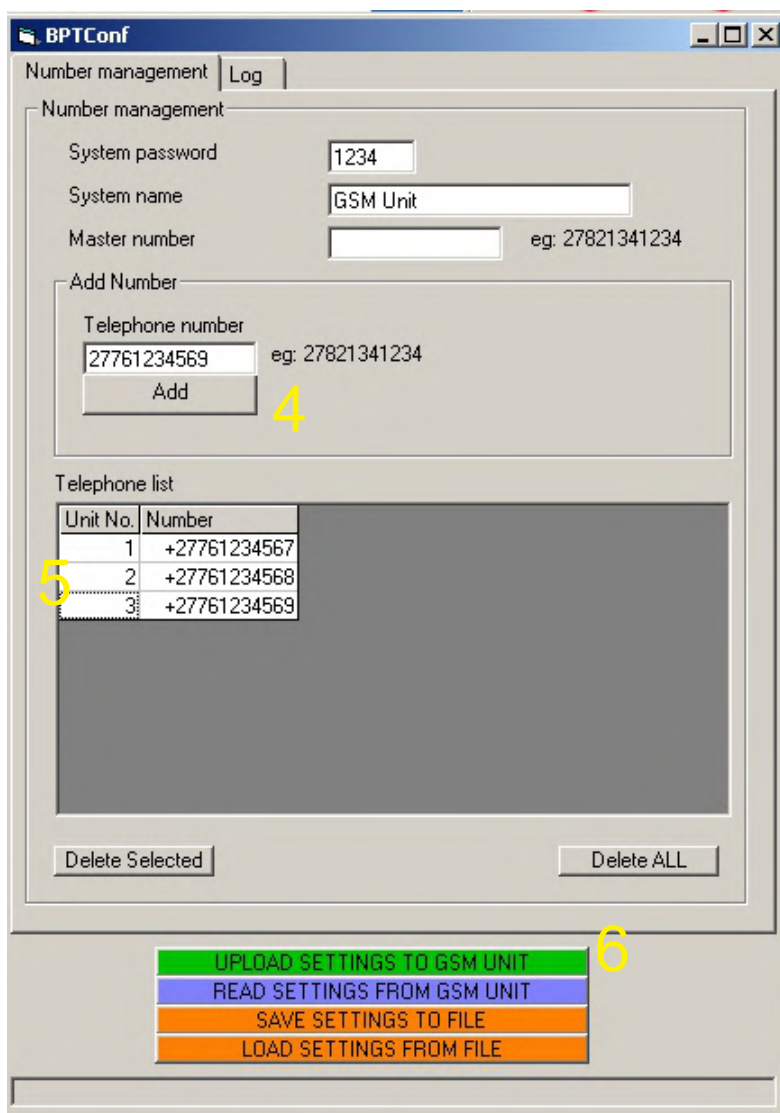
This program is used to manage the telephone numbers on the GSM unit. It may be used instead of sending SMSs to configure the unit.



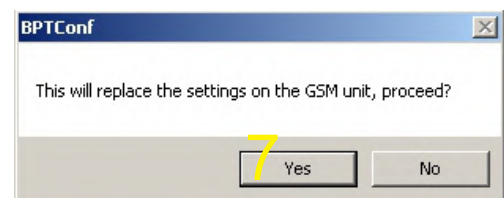
1. Open the program calls BPTConf in the TRIBPT start menu folder



2. Select the COMM port associated with the GSM Intercom. If you unsure what this is please follow the steps in the previous pages on changing the comm port.
3. Click the GSM INTERCOM button



4. Enter in the unit telephone number and click the ADD button
5. Enter in the unit number associated with the telephone number
6. Once all numbers have been entered click the "UPLOAD SETTINGS TO GSM UNIT"
7. Click YES to upload numbers to the unit.



8. Successful transfer will be indicated but a popup window